



Company Profile

Founded in 2003, Guangzhou Wanglu Technology Co., Ltd is a high-tech company specialized in the developing, manufacturing and sales of CCTV tester, HD converter and OTDR.

The New Generation CCTV Tester is an installation and troubleshooting tool for CCTV system, cable and network projects. It supports 4K TVI /CVI /AHD /EX-SDI/ IP/ Analog camera test.

CCTV installers often need to carry a variety of testing tools to complete their work. This new tester combines the most needed tools in one easy-to-carry package. The meter eliminates the need to juggle several devices while on a ladder or lift, making working conditions safer and increasing productivity.

All products have got CE,FCC,RoHS certifications. They have been approved by plenty of customers whom from around the world like America, Europe, Middle East, Asia and Australia.

We insist on opening cooperation, focusing on high quality and improving innovative ability.



CCTV Tester Comparison table

Picture									
Model	X9	X7	IPC-8600 Plus	IPC-9800 Plus	IPC-4300 Plus	X4	IPC-3500 Plus	IPC-1800ADH Plus	IPC-1600 Plus
Basic functions									
Touch screen	Retina screen	Retina screen	Retina screen	IPS screen	IPS screen	IPS screen	Touch screen	IPS screen	Touch screen
Screen resolution	2048*1536	1920*1200	1920*1200	1920*1200	960*540	800*480	480*320	800*480	480*320
Screen size	8 inch	7 inch	7 inch	7 inch	4.3 inch	4 inch	3.5 inch	4 inch	3.5 inch
Dual 1000M Ethernet ports	√	×	×	×	×	×	×	×	×
Fast charging	√	×	×	√	×	×	×	×	×
RJ45 10/100/1000M auto adjust	√	√	√	√	√	√	√	√	√
Rapid ONVIF	√	√	√	√	√	√	√	√	√
4K H.265 camera test	√	√	√	√	√	√	√	√	√
Create ONVIF test report	√	√	√	√	√	√	√	√	√
IP discovery	√	√	√	√	√	√	√	√	√
Activate Hikvision & Dahua camera	√	√	√	√	√	√	√	√	√
Batch modify Hikvision& Dahua IP	√	√	√	√	√	√	√	√	√
Hikvision & Dahua camera test tool	√	√	√	√	√	√	√	√	√
RJ45 TDR cable test	√	√	√	√	√	√	√	×	×
Wi-Fi Hotspot	√	√	√	√	√	√	√	√	√
Built in Wi-Fi	√	√	√	√	√	√	√	√	√
Testerplay (screen projection)	√	√	√	√	√	√	√	√	√
Self-install android software	√	√	√	√	√	√	√	√	√
DC 12V voltage test	√	√	√	√	√	√	√	×	×
POE/PSE voltage test	√	√	√	√	√	√	√	×	×
HDMI signal output	√	√	√	√	√	×	×	×	×
Video Computings Tools	√	√	√	√	√	√	√	√	√
Split screen	√	√	√	√	√	√	√	×	×
Shortcut menu	√	√	√	√	√	√	√	×	×
Dropdown menu	√	√	√	√	√	√	√	√	√
Screen management	√	√	√	√	√	√	√	√	√
Office Software	√	√	√	√	√	√	√	√	√
Screen lock	√	√	√	√	√	√	√	√	√
PTZ control	√	√	√	√	√	√	√	√	√
PAL/NTSC Video Level Test	√	√	√	√	√	√	√	√	√
Customized protocols	√	√	√	√	√	√	√	√	√
Network test tool	√	√	√	√	√	√	√	√	√
4xzoom image	√	√	√	√	√	√	√	√	√
Snapshot, Video record and playback	√	√	√	√	√	√	√	√	√
Analog video test	√	√	√	√	√	√	√	√	√
Audio test	√	√	√	√	√	√	√	√	√
UTP cable test	√	√	√	√	√	√	√	×	×
Color bar generator	√	√	√	√	√	√	√	×	×
LED Light	√	√	√	√	√	√	√	×	×
DC48V PoE power output	√	√	√	√	√	√	√	√	√
USB 5V power output	√	√	√	√	×	×	×	×	×
DC 12V power output	DC12V/3A	DC12V/3A	DC12V/2A	DC12V/3A	DC12V/2A	DC12V/3A	DC12V/2A	DC12V/3A	DC12V/1A
Power adaptor	DC12V(2A)	DC12V(2A)	DC12V(2A)	DC12V(2A)	DC12V(2A)	DC12V(2A)	DC12V(2A)	DC12V(1A)	DC5V(2A)
Lithium Polymer battery	7.4V/7000mAh	7.4V/7000mAh	7.4V/5000mAh	7.4V/5000mAh	7.4V/5000mAh	7.4V/4000mAh	3.7V/2400mAh	3.7V/2400mAh	3.7V/3000mAh
Operating Time	13 hours	10 hours	16 hours	10 hours	12 hours	12 hours	8 hours	8 hours	8 hours
Optional functions(v)									
*HDMI signal input ,1080P	included function	included function	included function	√	√	√	×	×	×
*Cable tracer	included function	included function	included function	√	√	√	×	×	×
*Video level meter	included function	included function	included function	√	√	√	√	×	×
*Coaxial video level meter	included function	√	√	√	√	√	×	×	×
*BNC attenuation test	included function	√	√	√	√	√	×	×	×
*Digital multimeter	√	√	√	√	√	√	√	×	×
*Optical power meter	√	√	√	√	√	√	√	×	×
*Visual fault locator	√	√	√	√	√	√	√	×	×
*TDR cable test	√	√	√	√	√	√	√	×	×
*CVI(8MP) video signal test	√	√	√	√	√	√	√	4MP	×
*TVI(8MP) video signal test	√	√	√	√	√	√	√	included function	×
*AHD(8MP) video signal test	√	√	√	√	√	√	5MP	5MP	×
*EX-SDI(8MP) video signal test	√	√	√	√	√	√	×	×	×
*HD-SDI(1080P) video signal test	√	√	√	√	√	√	×	×	×
*3G-SDI(1080P) video signal test	√	√	√	√	√	√	×	×	×

Note : above functions with mark< * > are customizable functions
The data above is only for reference and any change of them will not be informed in advance

WANGLU®

10 years
experience

Multi-function CCTV tester

4K H.265

Analog, IP
4K TVI/CVI/AHD/EX-SDI/HD-SDI/3G-SDI



X9 series

2K Retina Display

4 Cores CPU

2G RAM

16G ROM

Guangzhou Wanglu Technology Co.,Ltd

Add: 2nd floor, Block C, DET building, No.2 Ruitai Road,Kaitai Street,Huangpu District, Guangzhou, China.

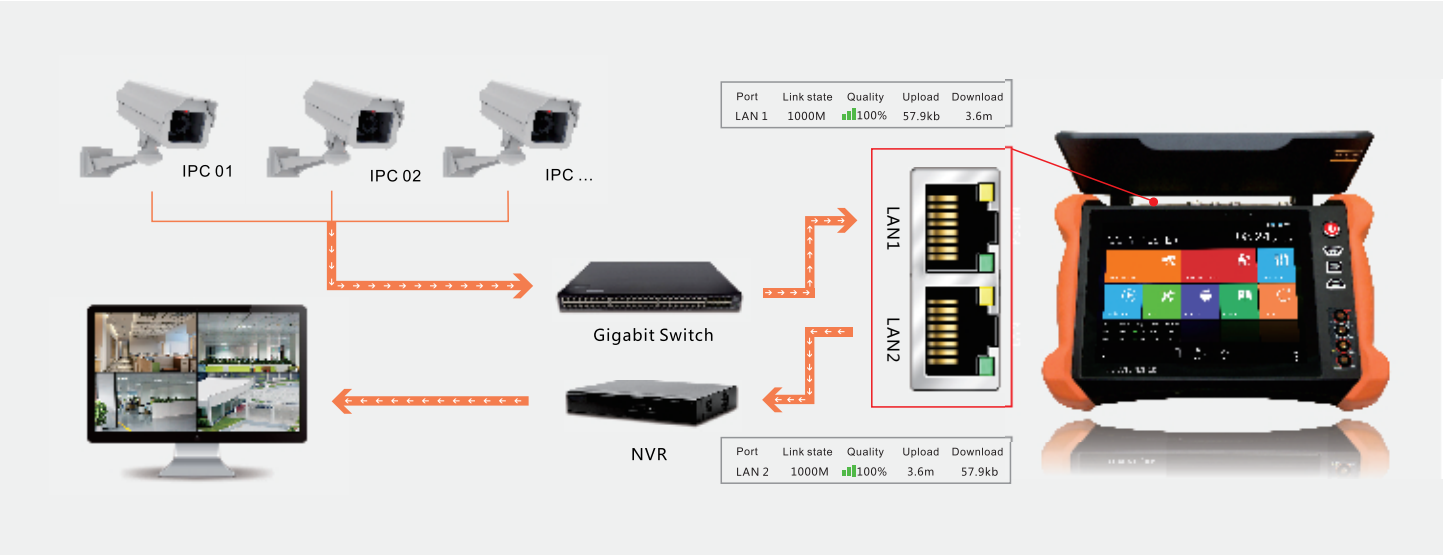
Http: //www.wanglu.com.cn www.cctvtester.com www.canwintech.com

Tel: (86 20)-87566118 Fax: (86 20)-38075108



01 Dual 1000M Ethernet port

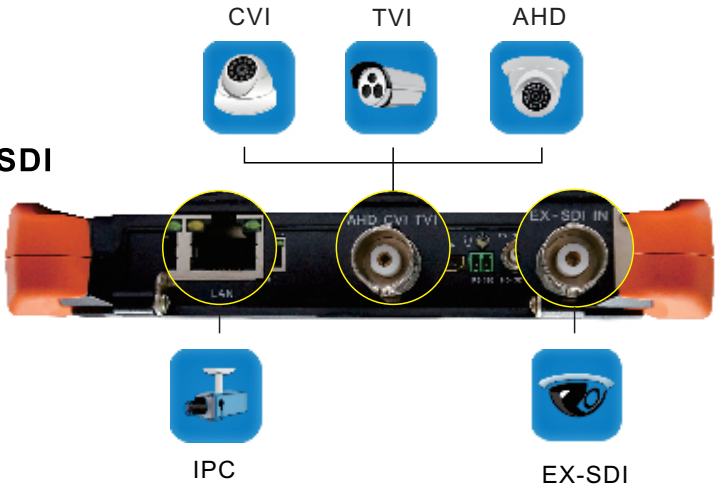
Connect two cameras to LAN port and PSE IN port, support 2000M Two-Sided data transmission rate, improve network transmission performance, one end connect to camera, the other end connect to NVR, online detection of access network device traffic, bandwidth information and network communication quality.



02 4K camera test

IP/AHD/CVI/TVI/HD-SDI/3G-SDI/EX-SDI

- ▶ New hardware decoding, support H.265 camera test via mainstream.
- ▶ In H.265/H.264 decoding, the mainstream resolution up to 12MP.
- ▶ HD coaxial 4.0, support TVI 8MP, CVI 8MP, EX-SDI 8MP, AHD 8MP camera test, UTC control and call OSD menu, support snapshot, video record, 4xzoom and playback.

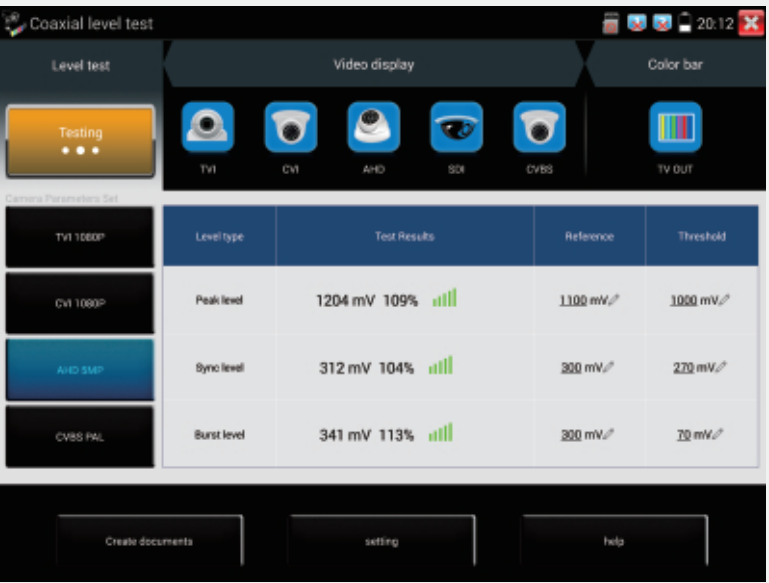


HD coaxial camera type/Resolution	720P	1080P	3MP	4MP	5MP	4K(8MP)
CVI	1280X720P 25/30/50/60FPS	1920X1080P 25/30FPS	---	2560X1440P 25/30FPS	---	3840X2160P 12.5/15FPS
TVI	1280X720P 25/30/50/60FPS	1920X1080P 25/30FPS	2048X1536P 18/25/30FPS	2688X1520P 15FPS 2560X1440P 15/25/30FPS	2592X1944P 12.5/20FPS	3840X2160P 12.5/15FPS
AHD	1280X720P 25/30/50/60FPS	1920X1080P 25/30FPS	2048X1536P 18/25/30FPS	2560X1440P 15/25/30FPS	2592X1944P 12.5/20FPS	3840X2160P 15FPS
EX-SDI	1280X720P 25/30/50/60FPS	1920X1080P 25/30/50/60FPS	---	2560X1440P 25/30FPS	---	3840X2160P 20/30FPS
HD-SDI	1280X720P 25/30/50/60FPS	1920X1080P 25/30/50/60FPS	---	---	---	---
3G-SDI	---	1920X1080P 50/60FPS	---	---	---	---

Decoding/Resolution	720P	960P	1080P	3MP	4MP	5MP	6MP	8MP	4K	12MP
H.265	√	√	√	√	√	√	√	√	√	√
H.264	√	√	√	√	√	√	√	√	√	√

03 4K HD Coaxial video level meter test

- ▶ Through hardware high-speed sampling and processing technology, accurately measure video peak level, sync level and burst level, can check camera transmission image quality.
- ▶ Combined HD Coaxial and analog camera test, can select corresponding camera type and display image directly.



Video level	Reference value
Peak level	1000±200mV
Sync level	300±35mV
Burst level	220±20mV

Different camera manufacturers, different standards.

By one key to create testing report, save level value, camera and meter info.

Accurately judgment BNC cable whether is normal.

04 Intelligent fast charging



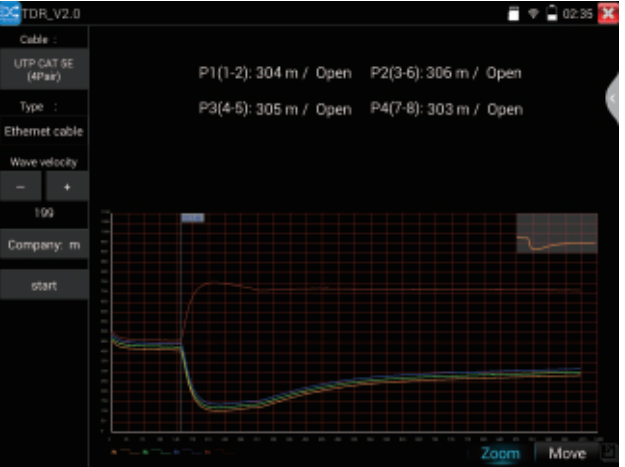
Charging 10 minutes, working for 30 minutes

7000mAh Lithium Polymer battery

The full Charging time is about 3.5 hours, working time lasts 13 hours.

05 The new generation TDR_2.0

- ▶ Cable short- circuit and break point test.
- ▶ New interface and system, the curve and value simultaneously display, move the curve, locate the fault point.
- ▶ The cable wave speed can be manually added and adjusted, and fault value directly display, BNC cable, elevator cable, RVV cable, network cable, and telephone cable etc test.



06 Digital cable tracer

Digital mode with strong anti-interference ability and no noise

